

Interchangeable Fuse Cutouts

Porcelain and Silicone Cutouts

Peak Demand offers its line of porcelain cutouts as part of the Pinnacle™ Series product family and its line of silicone-composite cutouts as part of the Summit™ Series family of products. Regardless of the insulator selected, Peak Demand cutouts have been designed and tested to stand up to the toughest environment.

We designed, tested, improved, and tested again until we were sure we had a cutout that is second to none.

The Design Team

Peak Demand cutouts were designed by an engineering team with more than 30 years of experience in design, manufacturing, component supply, sales, and customer support of cutouts in the United States and abroad. Each individual on the team is a member of IEEE with one having a presence with the IEEE Committee which writes, reviews, and updates the IEEE cutout standards.

Test Reports

All cutouts have been or will be tested to IEEE C37.42. All tests have been done at globally recognized labs. Test reports are available by request.

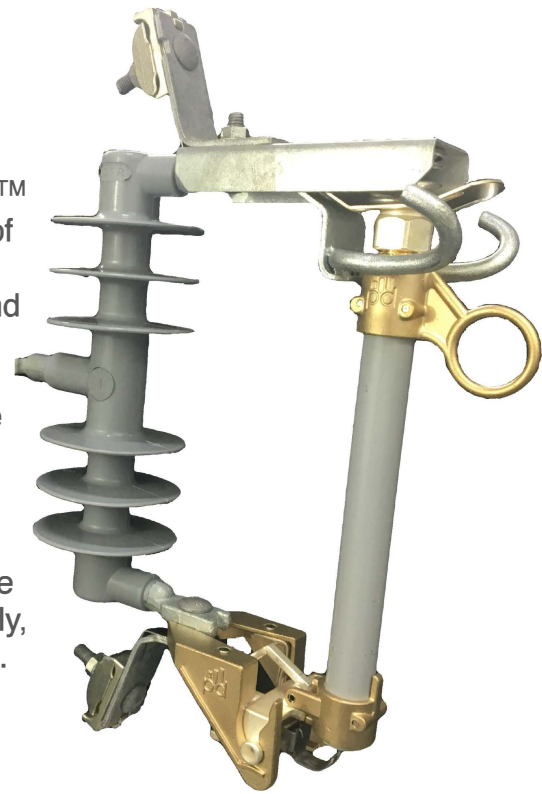
Verified Interchangeability

We tested interchangeability because we know it's critical to utility customers.

Peak Demand's fuse holders have been tested for fit and thermal heat rise in the fuse supports of other manufacturers' cutouts. These tests prove that Peak Demand's fuse holder and fuse supports fit and function in the fuse supports or the fuse holders of other manufacturers.

With verified interchangeability, Peak Demand cutouts will be easily deployed and serviced.

Samples available. Go to [PeakDemand.com/try-a-cutout](https://www.peakdemand.com/try-a-cutout)



The Peak Demand Advantage

- Local and overseas manufacturing capability to meet price and lead time needs
- Local stocking to meet delivery needs
- Friendly team of industry veterans with decades of experience serving utility customers
- Real-time inventory monitoring through [MyPeakDemand.com](https://www.peakdemand.com)

Contact EnerLink for application support in
Alberta, British Columbia, Yukon, and NWT
780-912-1020, hello@enerlinkcorp.com
www.enerlinkcorp.com



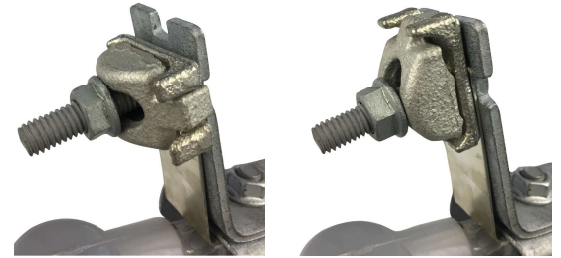
PEAK DEMAND INC.
www.peakdemand.com
1.844.PEAK.247 | 1.844.732.5247
121 Nash Street NW Wilson, NC 27893 USA



Designed With Lineman Feedback

Easy To Install

When selecting the parallel groove terminal option both the top and bottom terminals are rotatable. This allows linemen to terminate in the orientation best suited for the installation. No compromising.



Easier To Fuse

The fuse tube and fuse link fastening bolt lie at a 90 degree angle. Why does this matter? It allows linemen to easily tighten or loosen the bolt with one hand holding the fuse tube and one hand on the wrench.



See The Difference - Easy To Find

Our patent-pending visual open indicator was specifically designed with linemen in mind. The reflective indicator makes an open fused cutout easier to find. Low light and rainy conditions will no longer impede your ability to find an open fused door.

Get this option by simply using a V as the last digit of any Peak Demand cutout style number. Example: FCS-11P110-NV



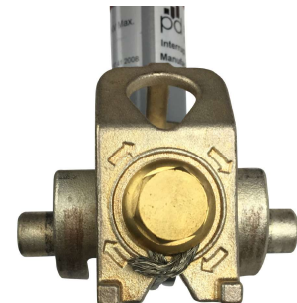
We Didn't Cut Corners - We Added Them

We didn't cut corners when designing our cutout, we made more of them. To make fuse holder cap removal a breeze we designed a hex style cap. Two and four-sided caps are more difficult to remove.



Making The Job A Bit Easier

We added small arrows to the bottom of the fuse holder trunnion. Why? Because when a linemen is fusing the device there is only one right way to wrap the fuse wires. Regardless of experience level, just follow the arrows and you'll get it right every time.



Portfolio

Peak Demand's silicone and porcelain cutouts are available in 15.5kV and 27.6kV ratings. Each cutout can be fitted with either a 100amp or 200amp fuse holder or a 300amp disconnect blade.

Part number configurator

Digit 1 - 2	Digit 3		Digit 4	Digit 5	Digit 6	Digit 7	Digit 8 - 9			Digit 10	Digit 11
Product	Insulator Type	-	Rated Voltage	BIL	Terminal Type	Continuous Current Rating	Interruption Current		-	Bracket Type	Options
FC	S	-	1	1	E	N	0	0	-	N	N
	P		2	2	P	1	0	8		A	V
				5		2	1	0		B	
				7		3	1	2			
				8			1	6			

Example part numbers: FCS-11P110-NV; FCP-25E208-BV

Part number digit options

Digit 3		Digit 4		Digit 5		Digit 6	
Insulator Type		Rated Voltage (KV)		BIL (KV)		Terminal Type	
S	Silicone	1	15.5kV	1	110kV	E	Eye Bolt
P	Porcelain	2	27.6kV	2	125kV	P	Parallel Groove
				5	150kV		
				7	170kV		

Digit 7		Digit 8 - 9		Digit 10		Digit 12	
Continuous Current Rating		Interruption Current (kAic)		Bracket Type		Options	
N	Not Applicable	00	Solid blades	N	No Bracket	N	None
1	100A	08	08kAic	A	NEMA A	V	Visual Indicator Reflector on Fusetube
2	200A	10	10kAic	B	NEMA B		
3	300A	12	12kAic				
		16	16kAic				

Porcelain Part Number Cross Reference

Cross Reference Table For Interchangeable Style Cutouts								
				Peak Demand Pinnacle Series	Hubbell Type C	ABB Type ICX	Cooper Type L	MPS Type XS
Volt	BIL	Current	kAIC	Porcelain	Porcelain	Porcelain	Porcelain	Porcelain
15	95 or 110	100	10	FCP-11*110-**	C710-112	X1N(##)NAM11	L4B1(##)A	89021R10
15	95 or 110	100	16	FCP-11*116-**	C710-114	X1N(##)NLM11	L4BA(##)A	89031R10
15	110	100	10	FCP-11*110-**	C710-412	X1N(##)NAM11	L4B1(##)A	89021R10
15	110	100	16	FCP-11*116-**	C710-414	X1N(##)NLM11	L4BA(##)A	89031R10
27	125	100	8	FCP-22*108-**	C710-211	X2N(##)NAM12	L9C1(##)A	89022R10
27	125	100	12	FCP-22*112-**	C710-213	X2N(##)NMM12	L9CA(##)A	89032R10
27	150	100	8	FCP-25*108-**	C710-311	X5N(##)NAM12	L9D1(##)A	89042R10
27	150	100	12	FCP-25*112-**	C710-313	X5N(##)NMM12	L9DA(##)A	89052R10
27	170	100	12	FCP-27*112-**	C710-513	X7N(##)NFA34	---	89053R10
15	95 or 110	200	12	FCP-11*212-**	C710-143	X1N(##)NPA21	L4A2(##)A	89071R11
15	110	200	12	FCP-11*212-**	C710-423	X1N(##)NPA21	L4B2(##)A	89071R11
27	125	200	10	FCP-22*210-**	C710-242	X2N(##)NWA22	L9C2(##)A	89072R11
27	150	200	10	FCP-25*210-**	C710-342	X5N(##)NWA22	L9D2(##)A	89092R11
27	170	200	12	FCP-27*212-**	C710-643	---	---	---
15	95 or 110	300	Blade	FCP-11*300-**	C710-133	X1N(##)NCA31	L4A3(##)A	89221R10
15	95 or 110	300	Blade	FCP-11*300-**	---	X1N(##)NCA31	---	89221R10
15	110	300	Blade	FCP-11*300-**	C710-433	X1N(##)NCA31	---	89221R10
27	125	300	Blade	FCP-22*300-**	C710-233	X2N(##)NDA32	L9C3(##)A	89222R10
27	150	300	Blade	FCP-25*300-**	C710-333	X5N(##)DA32	L9D3(##)A	---
27	170	300	Blade	FCP-27*300-**	C710-533	X7N(##)NFA34	---	89253R10

Please note: A " " represent a location of an option digit in the part number. For a list of Peak Demand options please see "Part number digit options" on the previous page. If you have any questions please do not hesitate to contact your local Peak Demand representative, email CustomerService@peakdemand.com, or call 844.Peak.247 (844.732.5247)

Silicone Composite Part Number Cross Reference

Cross Reference Table For Interchangeable Style Cutouts									
				Peak Demand Summit Series	Hubbell Type CP	ABB Type ICX	Cooper Type S	MPS Type XS	MPS Type XS
Volt	BIL	Current	kAIC	Composite	Composite	Composite	Composite	G2 Polymer	G1 Polymer
15	95 or 110	100	10	FCS-11*110-**	CP710-112	X1J(##)NAM11	S4B1(##)A	SC15HG110	89021R10-P
15	95 or 110	100	16	FCS-11*116-**	CP710-114	X1J(##)NLM11	S4BA(##)A	SC15HG116	89031R10-P
15	110	100	10	FCS-11*110-**	CP710-412	X1J(##)NAM11	S4B1(##)A	SC15HG110	89021R10-P
15	110	100	16	FCS-11*116-**	CP710-414	X1J(##)NLM11	S4BA(##)A	SC15HG116	89031R10-P
27	125	100	8	FCS-22*108-**	CP710-211	X2J(##)NAM12	S9C1(##)A	SC27SG108	---
27	125	100	12	FCS-22*112-**	CP710-213	X2J(##)NMM12	S9CA(##)A	SC27SG112	---
27	150	100	8	FCS-25*108-**	CP710-311	X5J(##)NAM12	S9D1(##)A	SC27SG108	89042R10-P
27	150	100	12	FCS-25*112-**	CP710-313	X5J(##)NMM12	S9DA(##)A	SC27SG112	89052R10-P
27	170	100	12	FCS-27*112-**	CP710-513	X7J(##)NFA34	---	SC38HG112	89053R10-P
15	95 or 110	200	12	FCS-11*212-**	CP710-143	X1J(##)NPA21	S4A2(##)A	SC15HG212	89071R11-P
15	110	200	12	FCS-11*212-**	CP710-423	X1J(##)NPA21	S4B2(##)A	SC15HG212	89071R11-P
27	125	200	10	FCS-22*210-**	CP710-242	X2J(##)NWA22	S9C2(##)A	SC27SG210	---
27	150	200	10	FCS-25*210-**	CP710-342	X5J(##)NWA22	S9D2(##)A	SC27SG210	89092R11-P
27	170	200	12	FCS-27*212-**	CP710-643	---	---	SC38HG212	---
15	95 or 110	300	Blade	FCS-11*300-**	CP710-133	X1J(##)NCA31	S4A3(##)A	SC15HG300	89221R10-P
15	95 or 110	300	Blade	FCS-11*300-**	---	X1J(##)NCA31	---	SC15HG300	89221R10-P
15	110	300	Blade	FCS-11*300-**	CP710-433	X1J(##)NCA31	---	SC15HG300	89221R10-P
27	125	300	Blade	FCS-22*300-**	CP710-233	X2J(##)NDA32	S9C3(##)A	SC27SG300	---
27	150	300	Blade	FCS-25*300-**	CP710-333	X5J(##)DA32	S9D3(##)A	SC27SG300	---
27	170	300	Blade	FCS-27*300-**	CP710-533	X7J(##)NFA34	---	SC38HG300	89253R10-P

Please note: A " * " represent a location of an option digit in the part number. For a list of Peak Demand options please see "Part number digit options" on the previous page. If you have any questions please do not hesitate to contact your local Peak Demand representative, email CustomerService@peakdemand.com, or call 844.Peak.247 (844.732.5247)