



BENSHAW
Applied Motor Controls



Contact EnerLink for application support in
Alberta, British Columbia, Yukon, and NWT
780-912-1020, hello@enerlinkcorp.com
www.enerlinkcorp.com

2021 Benshaw Line of Products

LOW VOLTAGE SOFT STARTERS - CHASSIS

EMX4i SERIES PROTECTED CHASSIS SOFT STARTER



Smart does not have to mean complex ... EMX4i Series Protected Chassis Soft Starters from Benshaw are designed to make your life easier, with an intuitive display, quick setup menus and flexible connectivity functions.

Ratings from 200 - 690 V up to 1200 A

- Quick application setup for easy commissioning
- Simulation mode offers fast and easy testing - no need for line power or motor
- Automatic timers and schedulers with the addition of smart card
- Smart card technology for industry specific functionality
- Pocket Technician mobile troubleshooting app
- PowerThrough feature ensures minimal downtime on-site
- Emergency mode for continued operation during emergency situations
- Pluggable terminals
- USB port allows data retrieval and firmware updates without adaptor or cable

CSXi SERIES COMPACT SOFT STARTER



Benshaw CSXi Series Low Voltage Soft Starters are compact, easy-to-use soft starters with built-in motor protection. CSXi Series Low Voltage Soft Starters provide greater control for starting and stopping of three phase motors, and, at only 6.5 inches (165mm) deep, Benshaw's CSXi Series starters are easy to mount in shallow enclosures.

Ratings from 200 - 575 V up to 200 A

- Simple setup via potentiometers
- LED status indicators for soft start, soft stop, motor protection and more
- Flexible mounting options
- Easy-to-install communication interfaces
- Built-in motor protection features, including thermal overload protection and more
- Energy saving design - internal bypass function reduces operating costs.

Guaranteed ... for three full years.

Only Benshaw has a three year guarantee.

Every Benshaw solid state starter is guaranteed for three full years. Other manufacturers limit their warranties to just one year. But at Benshaw, we believe that because we build them better, we can guarantee them longer.



LOW VOLTAGE SOFT STARTERS - CHASSIS

RB2 OPEN CHASSIS SOFT STARTER



RB2 Series Open Chassis Soft Starters combine Benshaw's high performance MX2 motor control technology with a rugged, compact and integral bypass RB series power section.

MX2 CONTROL

MX2 control technology from Benshaw provides a powerful, flexible and intelligent low voltage motor control platform. MX2-based controls offer multiple, user selectable starting modes, an increased selection of configurable digital and analog I/Os, comprehensive built-in metering capabilities, unprecedented onboard protection and an easy-to-use, intuitive user interface.

Ratings from 208 - 575 V up to 700HP

- Small, compact design
- Modular power stack assembly for ease of maintenance
- ModBus standard/other Fieldbus optional
- Multiple starting ramps for various applications
- Integrated metering system diagnostics
- Integral bypass contactors for efficient operation, eliminating the need for external fans
- Integrated motor protection
- Dual ramp capability for loaded/unloaded applications
- Power stack has multiple ratings for application flexibility

RB3 OPEN CHASSIS SOFT STARTER

Benshaw RB3 Series Open Chassis Soft Starters combine our advanced MX3 motor control technology with a rugged, compact and integral bypass RB series power section.

MX3 CONTROL

Benshaw's next generation MX3 technology propels low voltage motor control to even greater levels of performance and functionality. With its real-time clock, enhanced programming capabilities, ease-of-use and a unique, flexible architecture — Benshaw's MX3 controller delivers advanced motor control and protection with all of the rugged and dependable performance you've come to expect from the world leader in advanced controls and drives.

Ratings from 200 - 575 V up to 700HP

- 8 user-configurable inputs, 2 fixed inputs for start and bypass confirm, 6 user-configurable relay outputs and 1 fixed output for bypass control
- Real-time clock
- Motor PTC input
- Zero sequence ground fault
- RTD module support
- Event log (99 events)
- Start per hour limiter
- Back spin timer
- Time between starts limiter
- Zero speed switch input
- Power outage ride through (PORT)
- Power factor trip
- Patented CYCLO control (0-40% speed)

LOW VOLTAGE SOFT STARTERS - PACKAGED PRODUCT

MX4PB SERIES PACKAGED SOFT STARTERS WITH EMX4i TECHNOLOGY



Benshaw MX4PB Packaged Soft Starters provide solid state reduced voltage starting for normal operation and full voltage emergency backup starting with complete electronic motor protection at the flip of a switch. The unique, dual redundant design of our MX4PB Series soft starter is ideal for standard and heavy duty soft start applications where downtime is extremely disruptive to production operations and cannot be tolerated.

Ratings from 240 - 460 V up to 700 HP

- Combination circuit breaker
- Rotary disconnect operator
- Bypass contactor
- NEMA 4 or 12 enclosure
- Standard 120 V control power transformer
- Service entrance rated with circuit breaker
- Door-mounted keypad
- Configurable options:
 - Voltage (240 V/480 V)
 - Duty rating (standard/heavy duty)
 - Disconnect (none/circuit breaker)
 - HP (20 – 400 HP)
 - Control options
 - Space heater with thermostat
 - NEMA3R option with heater & thermostat
 - Communication interface options

Guaranteed ... for three full years.

Only Benshaw has a three year guarantee.

Every Benshaw solid state starter is guaranteed for three full years. Other manufacturers limit their warranties to just one year. But at Benshaw, we believe that because we build them better, we can guarantee them longer.



LOW VOLTAGE SOFT STARTERS - PACKAGED PRODUCT

RX4E SERIES PACKAGED STARTERS WITH EMX4i TECHNOLOGY AND ATL BYPASS



Benshaw RX4E Packaged Soft Starters provide solid state reduced voltage starting for normal operation and full voltage emergency backup starting with complete electronic motor protection at the flip of a switch. The unique, dual redundant design of our RX4E Series soft starter is ideal for applications where downtime is extremely disruptive to production operations and cannot be tolerated.

Ratings from 200 - 575 V up to 600 HP

- NEMA 12, dual redundant, combination/circuit breaker
- 450% — 30 seconds rated solid state starter, UL certified and listed
- 125% continuous duty rated solid state starter, UL certified and listed
- Selector switch for selecting solid state or full voltage operation mounted inside enclosure
- Full HP rated bypass contactor with a 1.15 service factor. It is wired for normal operation and full voltage start and run operation with normally open auxiliary contact
- Separately mounted SPE Series overload relay wired for full voltage start and run operation
- 110 volt control power transformer with primary and secondary fuses
- Door-mounted start and stop push-buttons, keypad, run indicating light, local-off remote switch, fault indicating light and overload reset
- Terminal strip mounted inside enclosure for remote start/stop connection
- Auxiliary relay with (4) Form C run contacts
- Analog I/O
- 1 Form c fault contact



LOW VOLTAGE SOFT STARTERS - PACKAGED PRODUCT

RX2E / RX3E ENCLOSED SEVERE DUTY COMBINATION SOFT STARTER



The RX2E / RX3E Enclosed Combination Soft Starter is a rugged, simple to use soft starter with built-in motor protection, providing greater control in starting and stopping of three phase motors. RX2E / RX3E Series Enclosed Combination Soft Starters come standard with a circuit breaker, full voltage rated emergency bypass contactor, door mounted Start/Stop push buttons, Local/Off/Remote selector switch and door mounted keypad.

Ratings at 480 V up to 600 HP

- NEMA 12 or 3R enclosure
- Basic (RX2E) motor protection with adjustable overload settings.
- Advanced (RX3E) motor protection with adjustable overload settings.
- Real time clock with event recorder for up to 99 events (RX3E)
- Programmable using a door mounted LCD keypad or Modbus register mapping.
- Circuit breaker
- Full voltage rated emergency bypass contactor
- Door mounted Start/Stop push buttons
- Local/Off/Remote selector switch
- Door mounted keypad

Guaranteed ... for three full years.

Only Benshaw has a three year guarantee.

Every Benshaw solid state starter is guaranteed for three full years. Other manufacturers limit their warranties to just one year. But at Benshaw, we believe that because we build them better, we can guarantee them longer.



LOW VOLTAGE SOFT STARTERS - PACKAGED PRODUCT

CSXi SERIES PUMP PANELS



Ratings from 230- 575 V up to 200HP

- NEMA 3R enclosure
- CSXi soft starter with internal bypass
- Circuit breaker with door operator (35 kAIC)
- Control power transformer
- Space heater with thermostat
- Start/Stop Pushbutton, HOA, Power On/Run/Fault lights

CSXi Series Pump Panels from Benshaw provide the most cost-effective way to add reliable, low voltage soft start capabilities to your system, with all components preinstalled in a NEMA 3R enclosure. Our standard panel configurations make it easy for you to add a soft starter to your system, with most of the wiring already completed for you. Pushbuttons and indicator lights are included, for the ultimate in easy installation.



LOW VOLTAGE DRIVES

S SERIES MULTI-PURPOSE MICRO DRIVES



Benshaw S Series Variable Frequency Micro Drives provide a rugged, compact, economical chassis drive solution for low horsepower applications. Each drive in the series offers quick setup and preconfigured settings for common VFD applications, and a flexible, programmable I/O for more demanding applications or complex control strategies. Dual rated for both variable torque (120%) and constant torque (150%).

Ratings from 240 - 480 V up to 15 HP

- V/Hz control
- Standard and heavy duty rated
- Sensorless vector (induction motors)
- Sensorless vector (PMAC)
- EMC filter built in (460V only)
- Slave multiple drives off one keypad
- Modbus RTU standard
- Ethernet IP, Modbus TCP, Profibus-DP (optional)
- Peer-to-peer communications
- PLC functionality (18 steps)
- Internal brake IGBT
- IP20 enclosure standard, NEMA 1 conduit box (optional)

SG SERIES GENERAL PURPOSE SENSORLESS VECTOR DRIVES



Benshaw SG Series Variable Frequency Drives are microprocessor based, offering sensorless vector control for AC induction motors. Our SG Series drives take advantage of a powerful 32-bit microprocessor control and next generation IGBT power switching technology to provide high performance electronic motor control.

Ratings from 200 - 575 V up to 600 HP

- Sensorless vector or V/Hz control
- Standard and heavy duty ratings
- Integral PID control
- Simple, easy-to-use LCD interface
- Uploadable / downloadable keypad
- Flexible, programmable I/O
- Economical, compact design
- Modbus RTU standard
- Windows-based software
- Profibus, LonWorks, BacNet, Modbus TCP (optional)

LOW VOLTAGE DRIVES

NEMA 4 WASHDOWN DRIVES



Benshaw S4 Series NEMA 4 Washdown Drives, 100 HP and below, are designed for high pressure washdown applications, and are built to withstand the harshest industrial environments. All drives in the S4 Series feature a rugged polycarbonate enclosure that exceeds NEMA 1, 12, 4 and 4X standards, with double labyrinth seals that keep dust, dirt, oil and water from entering the drive at pressures up to 1,000 psi.

Ratings from 230 - 600 V up to 200HP

- NEMA 4X / IP 66 washdown duty enclosure (100 HP and below) or NEMA12 (125-200HP)
- Gasketed, double labyrinth seal withstands high pressure washdown to 1,000 psi
- Standard and heavy duty ratings
- Standard braking transistor and resistor
- Sensorless vector control
- High starting torque
- Arctic Mode — maintains safe operation in cold environments
- LCD plain English display
- Integrated PID control
- Standard sequencer software
- Standard Modbus communications port

PACKAGED DRIVES



Benshaw is a recognized industry leader for quick shipment of built-to-order, packaged drive solutions. All Packaged Drives from Benshaw feature an your preferred drive with your choice of enclosure, disconnect, bypass, pilot devices, control strategy and filters.

Ratings from 230 - 460 V up to 700HP

- Pilot devices, control power transformers, switches, meters, relays, space heaters and more
- Circuit breaker protection
- Non-fused and fusible disconnect protection
- Flange or rotary handle mechanism
- Three contactor
- Reduced voltage solid state starters
- Standard designs (NEMA 1, 12, 3R) or custom enclosures
- Special enclosures — 4, 4X, air conditioned
- Motor control centers
- Line reactors 3% and 5%
- Long lead filters
- Load reactors
- Harmonic filters
- 18-pulse systems

CIRCUIT BREAKERS

R2CB SERIES MOLDED-CASE CIRCUIT BREAKER



Standard Features:

- High short-circuit interrupting ratings - 35kAic, 65kAic and 100kAic @ 480V
- Fixed Thermal and Fixed Magnetic trip settings
- Mechanical Lugs (Line and Load side included)
- Mounting-Hardware (Screws included)
- Handle and cable ordered separately
- Flange and rotary operators available
- Suitable for reverse feed applications
- Compact frame
- 800-1200 Amp breakers have electronic trip

The Bencshaw R2CB Series of Molded Case Circuit Breakers are designed to provide overload and short-circuit protection for industrial electrical equipment. Available in seven different compact frame sizes, the Bencshaw MCCB is a safe, reliable solution for applications from 15 to 1200 Amps.

FULL VOLTAGE CONTROLS

RC/RSC SERIES CONTACTORS



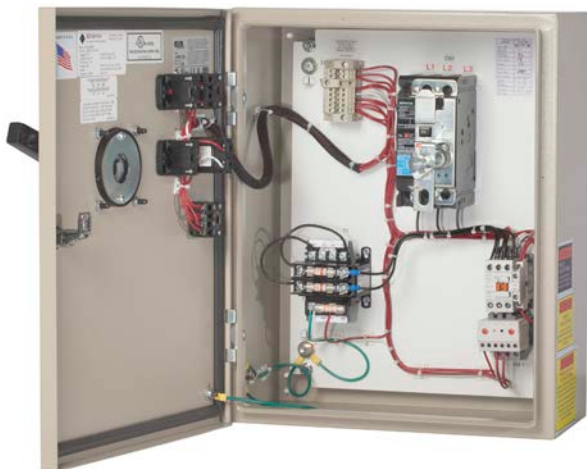
Benschaw's line of RediStart™ Contactors provides control for single-phase and three-phase motors, and for switching resistive or inductive loads up to 690 VAC. The entire line of RediStart™ contactors is built and tested to world-leading electrical and mechanical standards.

Ratings from 1-600HP (NEMA Size 00 - Size 7)

- DIN rail mountable to 150 amps
- Full product family to 800 amps
- Direct mount overload relays
- Draw out cassette coils 180 amps and above
- Integral coil surge suppression 180 amps and above
- Low coil power consumption
- Phase barriers supplied standard
- Uni-directional mounting
- Extremely long lifespan
- Compact size
- Unit identification marker
- AC or DC coil options
- Accessories & replacement parts

PREPACKAGED FULL VOLTAGE STARTERS

NON-COMBINATION / COMBINATION / CBRC12 SERIES / OVERLOAD PROTECTION



RCI starters are completely integrated, full voltage/non reversing starter packages. The CBRC12 Series design is ideal for industrial duty applications. Three wires in/out enables quick installation and startup.

- NEMA 12/3R enclosure
- NEMA rated contactor and separately mounted electronic class 20 protection relay
- 480/240:12 fused control power transformer
- Door-mounted start and stop push-buttons
- Door-mounted overload reset push-button
- Red run indicator light
- (2) Auxiliary contacts
- Hand-off-auto selector switch

RMSO/SPO SERIES BIMETALLIC OVERLOAD RELAYS



RMSO/SPO Series Overload Relays are bimetallic-style relays designed to protect AC-3 circuits (up to 150A @ 690V) and motors against overloads, phase failure, long starting times and stalling of the motor. RMSO and SPO Series overload relays can be integrally mounted to Benschaw RC and RSC contactors for thermal overload protection.

Ratings up to 800A and up to 690V

- IP20 protection (IEC 60 529)
- Trip indicator
- Reset button/selector for manual or auto reset
- Test trip device
- Available as class 10 or class 20
- Finger-safe terminals
- Overload adjustment dial cover
- 1 NO and 1 NC auxiliary contacts
- Identification labels
- Temperature compensation
- -60°C to 70°C storage temperature range
- -5°C to 55°C operating temperature range
- Differential-type phase loss protection
- Add-on accessories available
- Close couple to RC contactors

MOTOR STARTER PROTECTORS

RMSP SERIES - EFFICIENT FUNCTIONALITY AND COMPACT DESIGN



RMXP Series manual starters offer efficient motor starting functionality in a compact design. Protection functions include circuit, motor, starter and phase failure protection. They couple directly to RC Series contactors for a complete electro-mechanical combination starter.

- Front-mounted auxiliary contact
- Easy mounting onto DIN rail
- Large scale for current setting
- Auxiliaries snap on without tools
- Dial cover lock device
- Test trip device for checks of the trip mechanism
- Finger-safe terminals
- Dial cover
- Handle lock device (off positions)
- Class 10 only
- Three position operator handle (ON-OFF-TRIP) (on class 100AF only)
- Identification labels
- High interrupt capability

MEDIUM VOLTAGE SOFT STARTERS

MVRXE SOLID STATE SOFT STARTER



Benshaw's advanced MVRXE Dual Redundant Solid State Soft Starter is a microprocessor-controlled, reduced voltage soft starter for three phase induction motors. MVRXE Series soft starters from Benshaw are designed for severe duty applications, and offer a closed-loop current ramp for smooth, stepless motor acceleration.

Ratings from 2300 - 4160V up to 3000HP

- Solid state reduced voltage starting
- Full voltage ATL emergency backup feature
- NEMA 12 or NEMA 3R enclosure
- UL 347, Class E-2 combination
- Load break disconnect switch
- Class "R" motor fuses
- Inline vacuum contactor
- Solid state power poles
- Vacuum bypassed contactor
- Built-in self test
- Digital protection and metering
- UL zero sequence ground fault
- 500% for 30 seconds
- Modbus communications standard
- Available from stock

CBMVRMX SOLUTION FOR LARGE MOTORS



Only Benshaw has the backbone to support your large motor control requirements! Our CBMVRMX Series Combination Solid State Soft Starters are purpose built to support large motors up to 16,000 HP at 6900 V and 25,000 HP at 13800 V.

Ratings 6900V up to 16,00HP and 13.8kV up to 25,000HP

For large motor soft start applications, Benshaw CBMVRMX Series Soft Starters provide a circuit breaker solution for isolation and protection. Starting from this powerful base, Benshaw's engineering team will develop a custom solution for your specific large motor application. We offer the flexibility of using existing switchgear, or we can source new switchgear from any major vendor providing a seamless transition for maintenance personnel. Customers must provide single-phase control power for controls in this configuration.

MEDIUM VOLTAGE SOFT STARTERS

MVRMX ENGINEERED SOFT STARTERS



Benshaw's CFMVRMX Series Soft Starter is a fully integrated, programmable family of Class E2 load break/combination solid state starters. This integrated design includes control and power electronics, bypass and isolation contactors that reduce maintenance and operating costs when compared to other methods.

Ratings from 2.3 - 13.8kV up to 25,000HP

- Protects machinery from failure and excessive maintenance caused by mechanical shock during starting or stopping. The RediStart MVRMX provides smooth, stepless acceleration and controlled deceleration.
- Protects electrical systems from disruptive voltage drops and power outages caused by motor locked rotor inrush current. The RediStart MVRMX starter precisely controls the current ramp during start up.
- Protects mission-critical motors from failure or unscheduled outages caused by machine or electrical system faults. The RediStart MVRMX starter provides complete, high performance, coordinated line monitoring, motor control and protection.

MVE-P SERIES MEDIUM VOLTAGE SOFT STARTER



Benshaw's MVE-P Series Medium Voltage Soft Starter is a powerful, reliable solution for your medium voltage motor starting requirements. MVE-P Series soft starters bring together sophisticated soft starter motor control functionality in a robust, compact configuration.

Ratings from 2.3 - 13.8kV, 70A - 1200A, 400HP up to 30,000HP

- NEMA1, NEMA 12, NEMA 3R and outdoor rated enclosures
- Digital control module
- Starter/Off/Bypass selector switch
- Start/Stop pushbuttons
- Emergency Stop button
- Run/Stop/Fault indicator lights
- Load break disconnect switch
- In-line vacuum contactor
- Fully rated bypass vacuum contactor
- Motor overload protection

MEDIUM VOLTAGE ACROSS-THE-LINE STARTERS

CFMVATL MEDIUM VOLTAGE ACROSS-THE-LINE (ATL) STARTERS



Benshaw CFMVATL Medium Voltage Across-The-Line (ATL) Starters are full voltage controllers for three phase induction motors. All ATL starters from Benshaw are supplied in a free standing enclosure, with NEMA 1, NEMA 12 and NEMA 3R configurations available to suit application requirements. Our RediStart MX3 control package can be added as an option to provide a "Smart" CFMVRMXATL package.

Standard combination CFMVATL starters are supplied with a load break/fault make disconnect isolation switch, Class "R" motor current limiting fuses, vacuum motor starting contactor, and the "SPE" SureProtex electronic overload protection. The "Smart" Medium Voltage ATL package adds the RediStart MX3 control package for additional branch circuit monitoring motor protection, metering, diagnostics and communication.

Benshaw's compact, flexible, full voltage solid state starters can be customized to support reversing, multiple motor, combination and non-combination, induction, synchronous, wound rotor, mining duty (skid mounted), and other motor control requirements, and all are backed by Benshaw's full three-year warranty.

Ratings from 2300 - 15000kV up to 4000HP

- 3 phase, 50/60Hz, up to 15kV metal enclosed
- Withstand ratings to 50kA
- 45 / 60kV BIL for 5KV Class equipment
- Metal enclosed NEMA 1, 12, 3R enclosures
- Load matched load break and fuses
- HP rated bypass contactors
- Integrated electronic motor protection
- Real-time metering and diagnostics
- Isolated 120V control section

Motor Protection Option

- Electronic or digital overload
- MX3 Series control
- Motor protection relay

Additional Features

- Thermal viewing windows
- Live line indication
- Mimic bus
- Optional incoming section
- Communication protocols, Ethernet, DeviceNet, Profibus,
- Arc flash mitigation relays
- Zero sequence ground protection
- Ground balls
- RTD protection

MEDIUM VOLTAGE ACROSS-THE-LINE STARTERS

MVCB MEDIUM VOLTAGE SWITCHGEAR ASSEMBLIES



To ensure the safety of personnel servicing the equipment, all Benshaw medium voltage switchgear offerings include a rack-out circuit breaker design. A remote breaker control panel and arc flash sensing options are also available to further enhance personnel safety. In addition, Benshaw offers a full metal-clad switchgear solution.

MVCB switchgear assemblies are provided in a NEMA-rated enclosure configured for use as a stand-alone unit, in an equipment line-up or in a motor control center (MCC) configuration. Benshaw switchgear connects seamlessly to the rest of the Benshaw MCC for a space-saving design to feed line-ups or in jumbo starter solutions.

The Benshaw Application and Engineering Support team is available to customize switchgear designs to meet a customers' specific application needs without extended lead times.

Ratings from 2400 - 13800V up to 3000A

- 40 kA fault rated
- Rack-out design
- NEMA 1A indoor enclosure
- Welded 11 gauge steel construction
- Feeder protection with CPT and PT
- Green open pilot light
- Red closed pilot light
- Amber trip pilot light
- Open push-button
- Closed push-button
- Manual racking device
- Bus rated to CB size
- Line power top entry standard
- Load power top exit

Key Advantages

- Bolts directly to Benshaw MCC line-up or starter
- CSA special inspection
- Available in 1200 A or 2000 A standard (3000 A option is custom)
- Feeder protection included as standard — customer to specify manufacturer
- Available up to 13.8kV
- Configurable with added options
- Rack-out design standard
- Remote breaker control panel

MEDIUM VOLTAGE DRIVES

M2L MEDIUM VOLTAGE VARIABLE FREQUENCY DRIVE



Our M2L Medium Voltage Variable Frequency Drive family provides the utmost in performance, reliability, serviceability and safety. The M2L Series is designed for versatility with numerous installation configurations available to suit environmental conditions, providing significant cost savings and reduced total cost of ownership.

Benshaw M2L Medium Voltage Variable Frequency Drives feature a unique and patented topology with an independent transformer, a rectifier section, and inverter section, allowing Benshaw to offer flexible packaging options to accommodate a wide range of project-specific requirements and limitations.

Benshaw's modular, power-cell-based M2L inverters use the most reliable components available, such as low voltage IGBTs and dry-type film capacitors. They are equipped with the latest in safety features, including a fast and reliable arc flash detection system. This topology, along with the M2L's advanced remote monitoring system, helps minimize down-time, and simplify integration with other drive system components.

Ratings from 2300 - 4160V up to 770A

- Patented topology
- Flexibility of installation
- Industry-leading performance
- Enhanced reliability and efficiency
- Reduced cost of ownership
- Simplified serviceability
- Dependable safety
- Multi-pulse phase-shifting transformer
- Modular, power-cell-based multi-level inverter
- Multi-pulse diode-based rectifier
- Front access only design for simple and fast maintenance
- Inherently lower arc flash footprint
- Greatly reduced fault currents
- Distributed energy storage and isolated faults Arc flash detection in power cells

OTHER PRODUCTS:

IEC Medium Voltage Soft Starters

Mine Skid Mounted MV Controls

Medium Voltage Load Break Switches

Medium Voltage Junction Boxes

MLO- Main Lug Only Sections

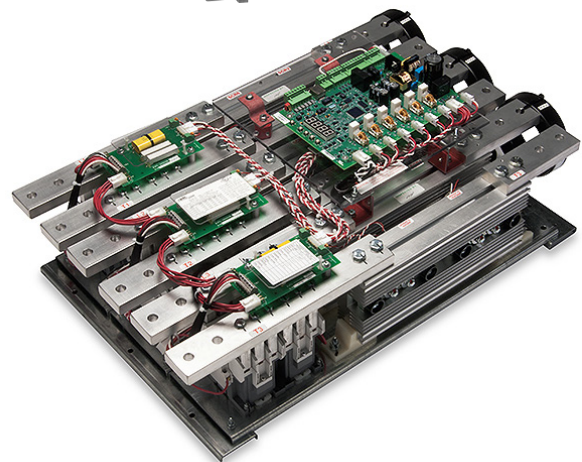
DC Injection Braking

Wound Rotor Motor Starters

Synchronous Controllers

Ball Mill Positioning

And more....





Benshaw's standard products are stocked in warehouses in the USA and Canada. . . ready for shipment to support your critical needs:

Benshaw.com

In the USA, call or fax

Phone: 412.968.0100

Fax: 412.968.5415

In Canada, call or fax

Phone: 519.291.5112

Fax: 519.291.2595

BenshawExpress.com

If you prefer to order online, BenshawExpress.com provides direct digital access to our complete inventory of standard controls, drives and spare parts - 24 hours a day, seven days a week, 365 days a year.

Save time with 24/7 online access at benshawexpress.com

Benshaw Express is a convenient, time-saving tool for Benshaw authorized distributors.

The Benshaw web store enables users 24/7 access to:

- Check price and availability
- Place orders
- Track open orders
- Obtain tracking for shipped orders
- View freight charges for recent shipments
- View invoices
- Customized levels of access

Access Benshaw Express by following the link on **Benshaw.com** or directly at **BenshawExpress.com**.

24/7 Technical Support

Benshaw is dedicated to providing comprehensive 24-hour-a-day, 7-day-a-week phone support. Benshaw provides repair, spare parts, field engineering, retrofit and training services, when and where you need us. You can count on our experienced team, backed by the latest diagnostics and repair tools and an extensive part inventory to support your operations.

Call 1.800.203.2416

24/7 Hotline Support from our operations

in Pittsburgh and Listowel (Canada):

- Technical phone support
- Overnight parts shipment
- 24-hour service dispatch
- Coordination of all service capabilities

Repairs

Repairs are made on Benshaw equipment by trained, experienced personnel, using the latest diagnostic and test equipment.

Field Services are performed on-site by skilled technicians, engineers or complete team if needed, including:

- Start-up commissioning
- Field repairs
- Field analysis/data collection • Preventative maintenance
- Retrofits

The Benshaw Product Line

A wide range of motor controls and drives is available.

- Solid-state starters fractional up to 30,000HP at 15kV
- LV AC drives to 800HP, MV AC drives to 10,000HP
- Electromechanical controls to 800A

Benshaw express is a 24/7 online inventory and order entry system for authorized Benshaw distributors:

- 24/7 shipment
- Air or truck delivery

Visit us online at
benshaw.com and
benshawexpress.com,
or contact:

BENSHAW, Inc.

615 Alpha Drive
Pittsburgh, PA 15238
Phone: 412.968.0100
Fax: 412.968.5415

BENSHAW Canada

550 Bright Street East
Listowel, Ontario N4W 3W3
Phone: 519.291.5112
Fax: 519.291.2595

Specifications are subject to change without notice.

©2021 Benshaw, Inc. PUB2021-BLP-SB printed in the USA



BENSHAW
Applied Motor Controls